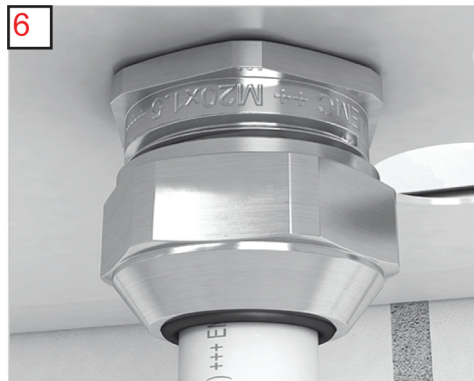
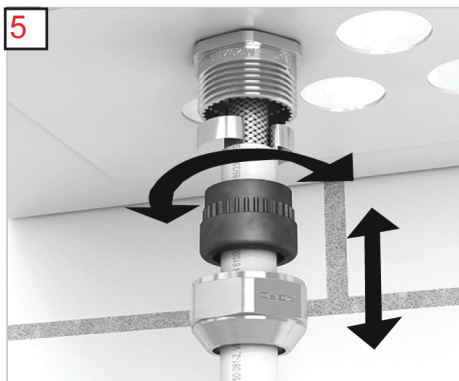
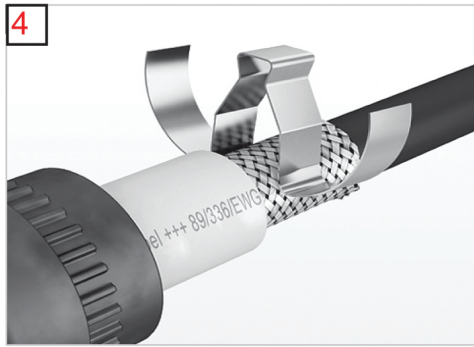
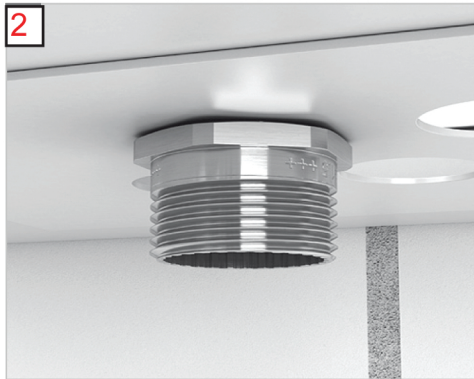
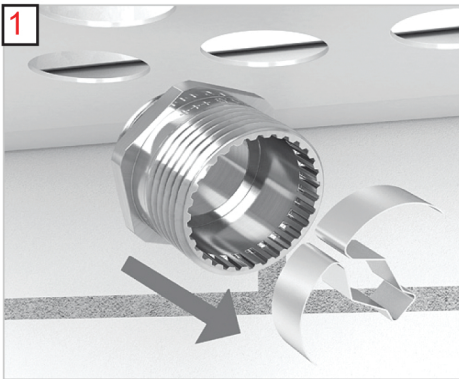


Heyco-Tite EMC-2 Brass Liquid Tight Cordgrips Assembly Instructions



1. Remove contact spring from interior of the cordgrip.
2. Install the body of the cordgrip into the chassis.
3. Remove the outer insulation from the cable exposing the conductive shielding.
4. Attach the contact spring to the conductive shielding.
5. Install the spring clip below the sealing gland and assemble the gland and sealing nut as shown.
6. Tighten the sealing nut.